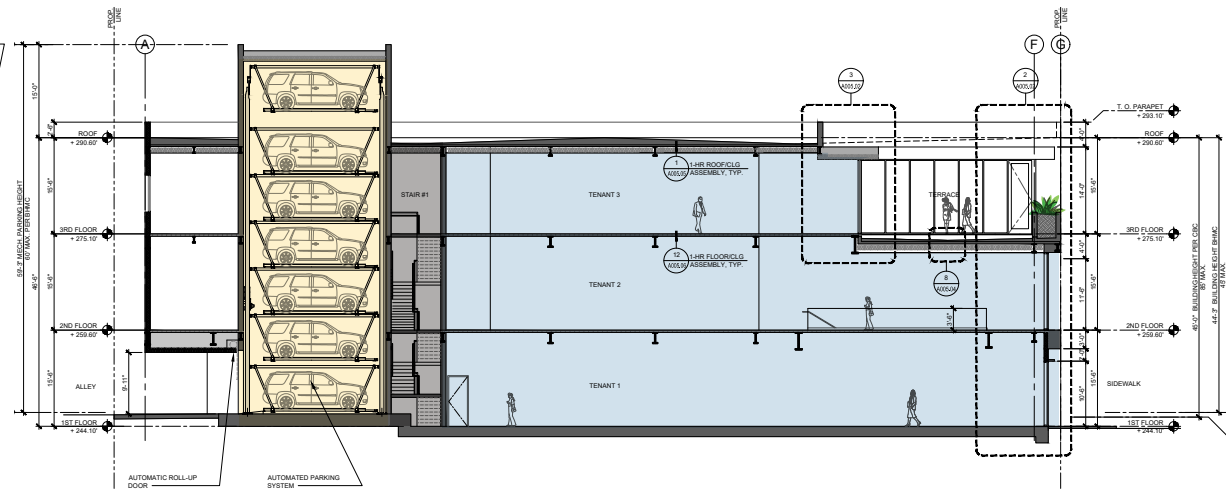
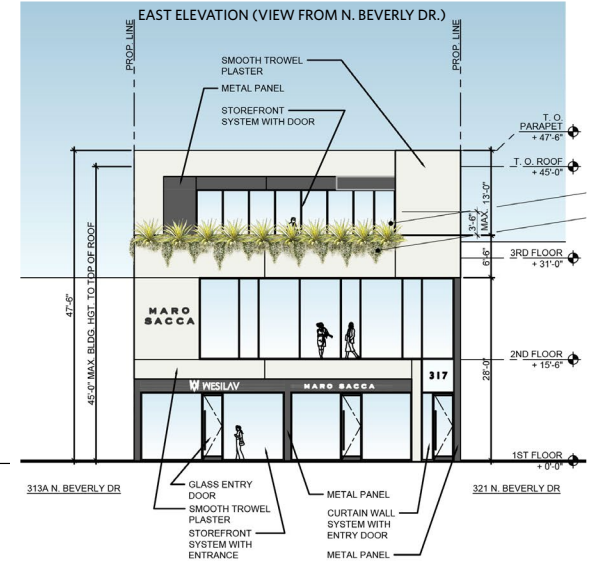
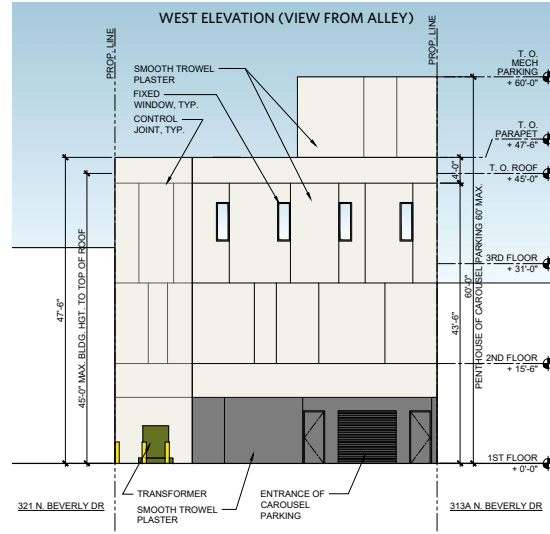
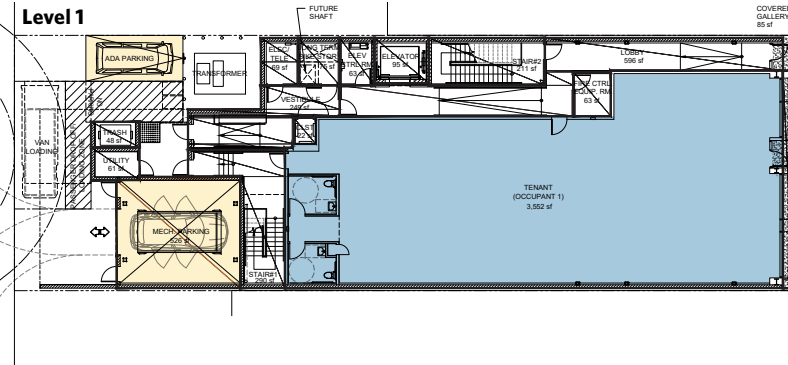
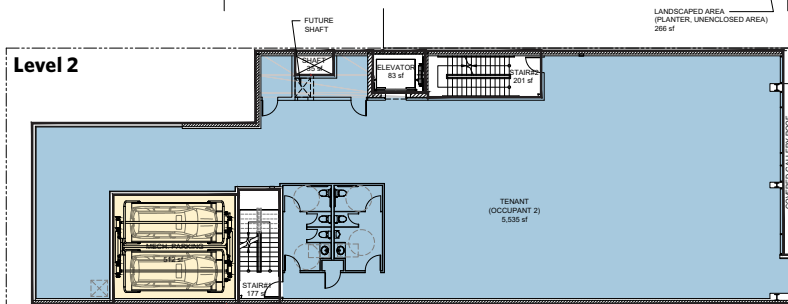
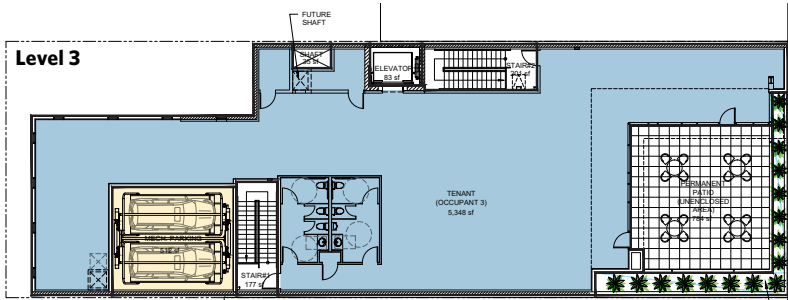


# 315-319 N. BEVERLY DRIVE

315-319 N. Beverly Drive, Beverly Hills, CA 90210

**For information:**  
**Ivan Aguilera**

E: [iaguilera@sterlingorganization.com](mailto:iaguilera@sterlingorganization.com)  
P: 855-647-0738



| UNIT    | LEVEL 1 TENANT | SQ. FT. | UNIT    | LEVEL 2 TENANT RETAIL | SQ. FT. | UNIT    | LEVEL 3 TENANT OFFICE | SQ. FT. | UNIT    | ROOFTOP   | SQ. FT. |
|---------|----------------|---------|---------|-----------------------|---------|---------|-----------------------|---------|---------|-----------|---------|
| Level 1 | Available      | 3,552   | Level 2 | Available             | 5,535   | Level 3 | Available             | 4,564   | Terrace | Available | 784     |

**Total Square Feet: 14,435**



The plan and its contents are furnished for informational purposes only and are intended only as a general description (but not represented, covenanted or warranted). The size and location of the project, the identity or nature of any occupant and all features, matters and other information included herein are subject to change without notice and should not be relied upon by any party. No representation or warranty, express or implied, is made as to the accuracy or reliability of this plan or its contents.