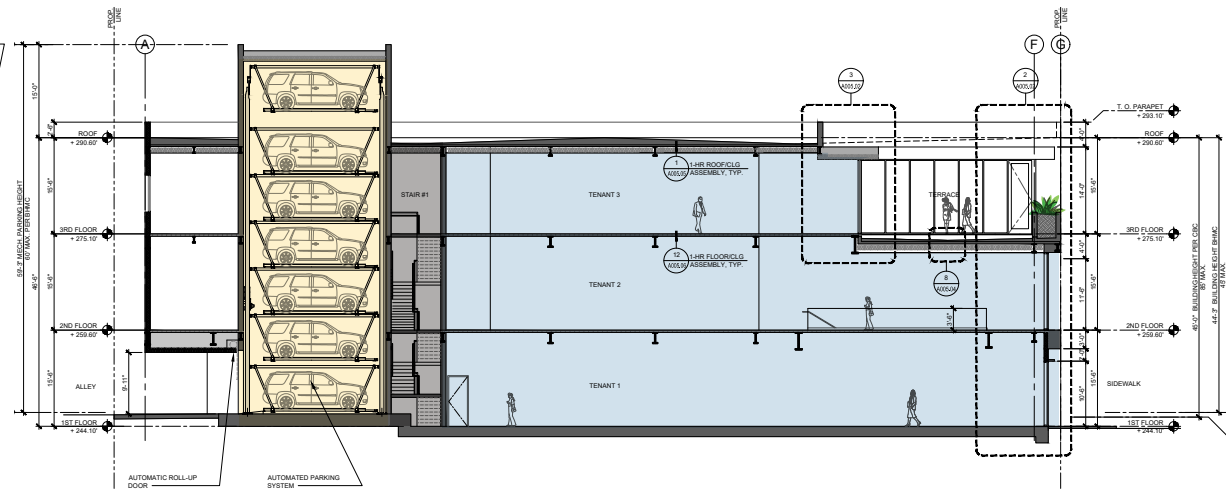
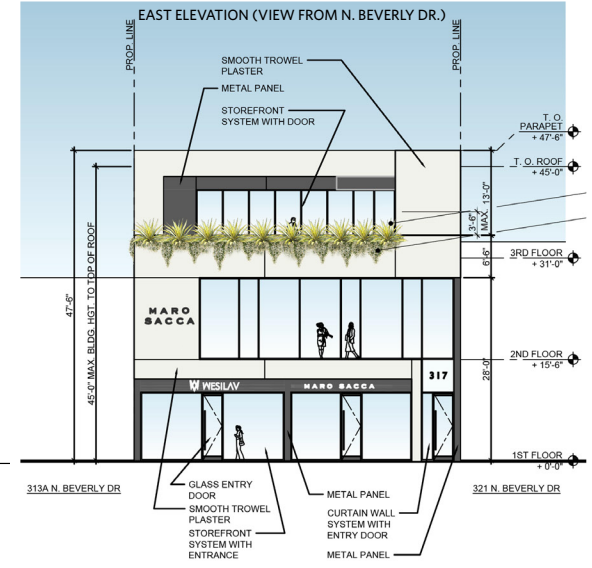
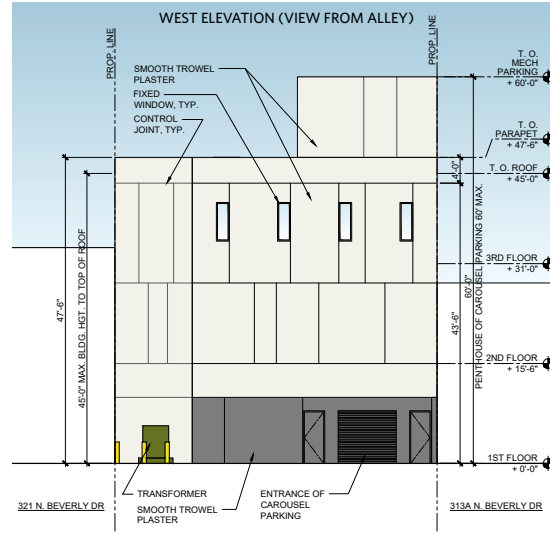
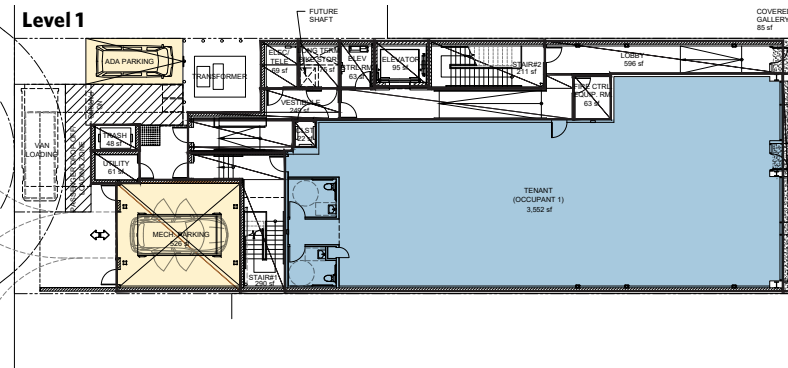
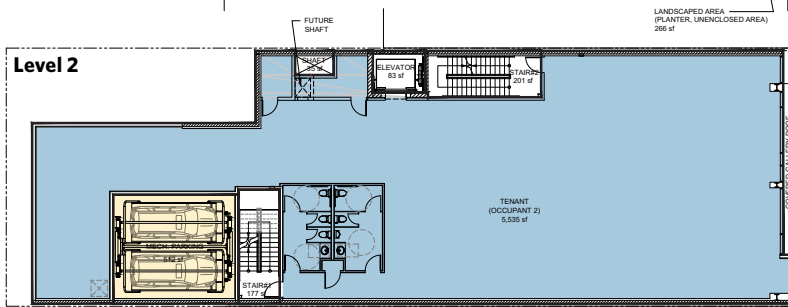
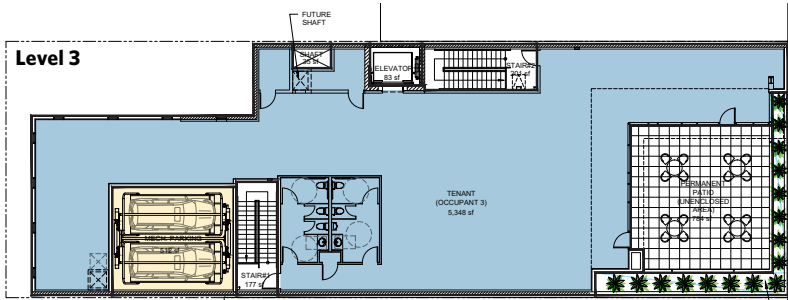


315-319 N. BEVERLY DRIVE

315-319 N. Beverly Drive, Beverly Hills, CA 90210

For information:
Ivan Aguilera

E: iaguilera@sterlingorganization.com
P: 855-647-0738



UNIT	LEVEL 1 TENANT	SQ. FT.	UNIT	LEVEL 2 TENANT RETAIL	SQ. FT.	UNIT	LEVEL 3 TENANT OFFICE	SQ. FT.	UNIT	ROOFTOP	SQ. FT.
Level 1	Available	3,552	Level 2	Available	5,535	Level 3	Available	4,564	Terrace	Available	784

Total Square Feet: 14,435



The plan and its contents are furnished for informational purposes only and are intended only as a general description (but not represented, covenanted or warranted). The size and location of the project, the identity or nature of any occupant and all features, matters and other information included herein are subject to change without notice and should not be relied upon by any party. No representation or warranty, express or implied, is made as to the accuracy or reliability of this plan or its contents.