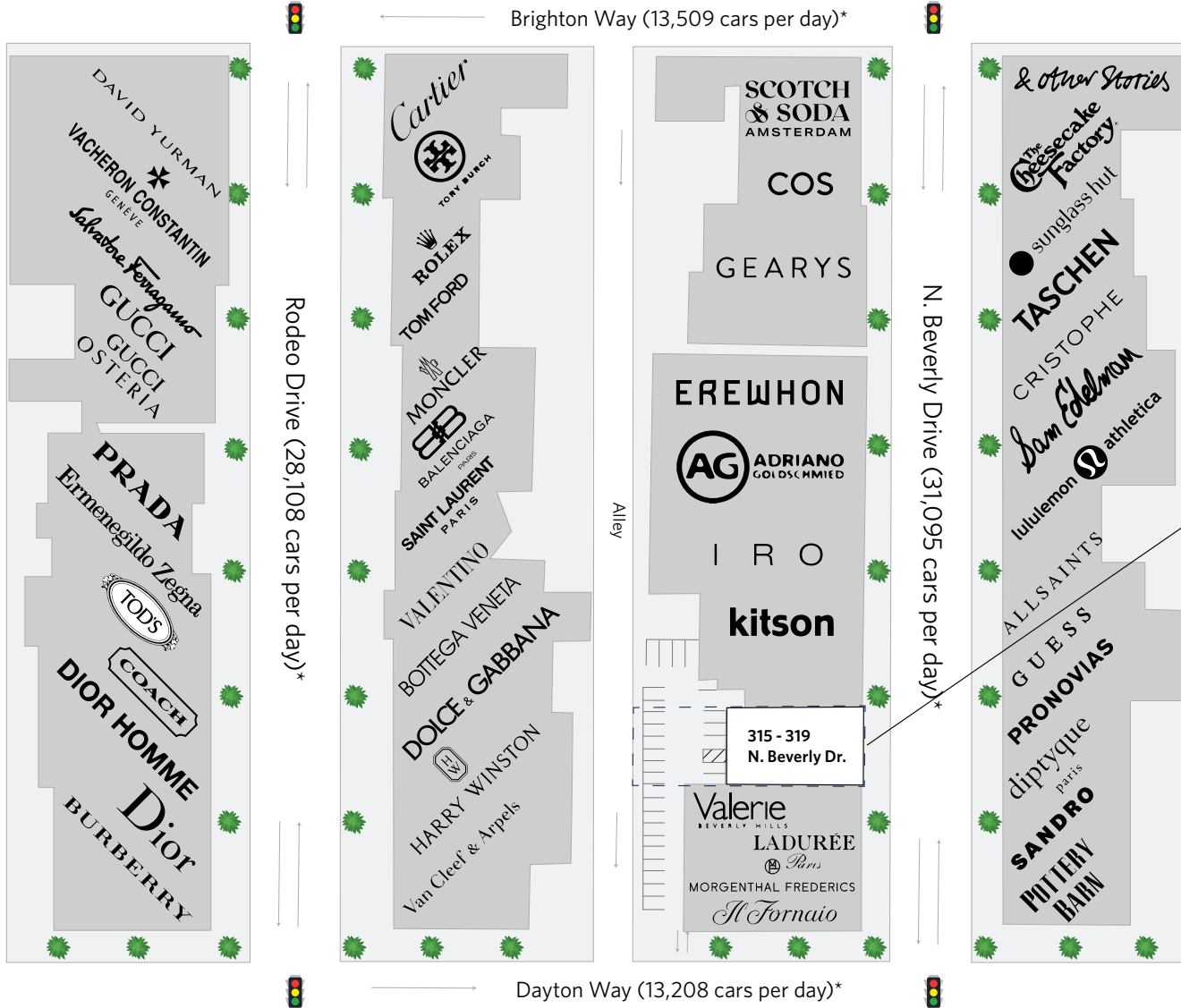


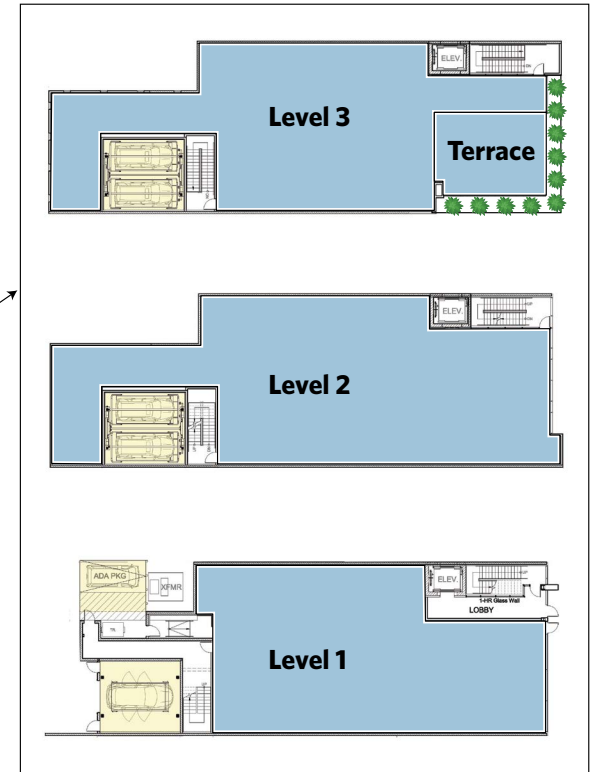
# 315-319 N. BEVERLY DRIVE

315-319 N. Beverly Drive, Beverly Hills, CA 90210



**For information:**  
**Ivan Aguilera**

E: [iaguilera@sterlingorganization.com](mailto:iaguilera@sterlingorganization.com)  
P: 855-647-0738



UNIT	TENANT	SQ. FT.
Level 1	Available	4,019
Level 2	Available	5,126
Level 3	Available	4,160
Terrace	Available	740

**Total Square Feet: 14,045**