

BOCA RATON, FL

< Traffic light at Butts Road

Interstate-95 (205,000 cars per day) >

# GLADES PLAZA

## LEASING PLAN

2200-2300 Glades Rd. & 2240 NW 19th St.

Boca Raton, FL 33431

Glades Road (62,000 cars per day)



- N
- ± 23.3 acres
- pylon
- 2nd Generation Restaurant Space



TOWN CENTER AT BOCA RATON

For information:  
**Karl Brinkman**

E: kbrinkman@sterlingorganization.com  
P: 855-912-7090



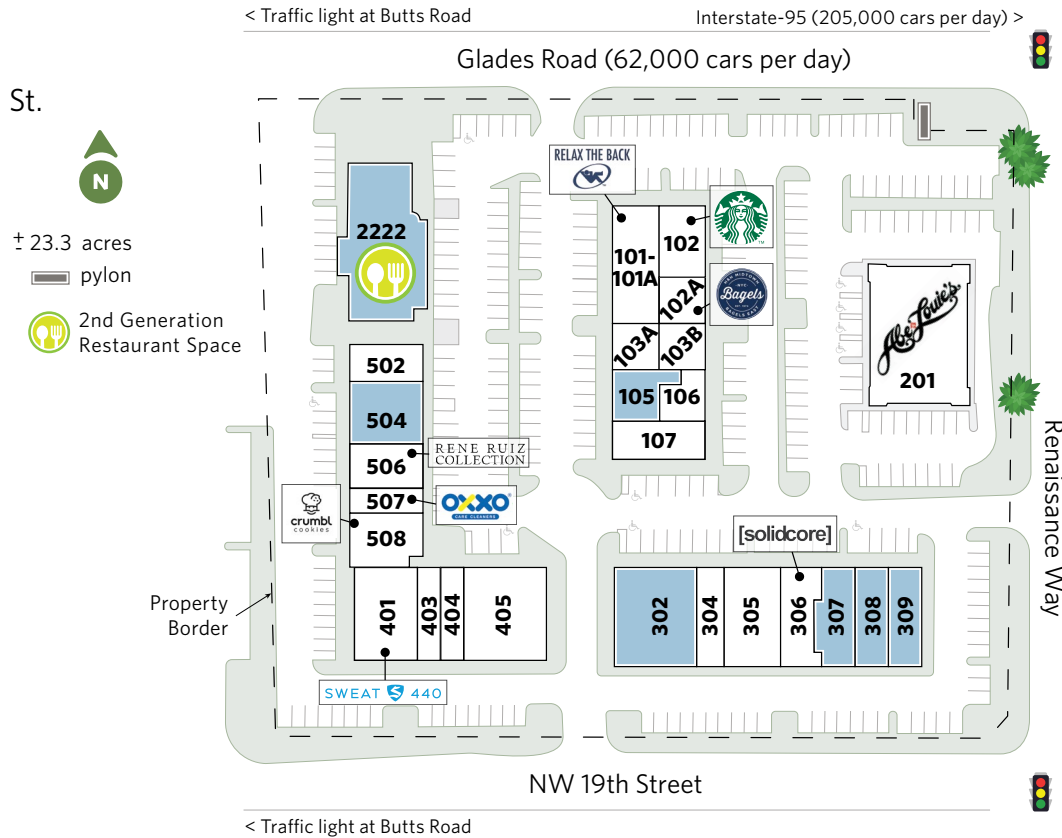
The plan and its contents are furnished for informational purposes only and are intended only as a general description (but not represented, covenanted or warranted). The size and location of the project, the identity or nature of any occupant and all features, matters and other information included herein are subject to change without notice and should not be relied upon by any party. No representation or warranty, express or implied, is made as to the accuracy or reliability of this plan or its contents.

# GLADES PLAZA

## LEASING PLAN

2200-2300 Glades Rd. & 2240 NW 19th St.

Boca Raton, FL 33431



**For information:**

**Karl Brinkman**

E: kbrinkman@sterlingorganization.com

P: 855-912-7090

| UNIT                | RETAIL TENANT         | SQ. FT.      | UNIT                | RETAIL TENANT                           | SQ. FT.      | UNIT                | RETAIL TENANT           | SQ. FT.      | UNIT  | RETAIL TENANT         | SQ. FT.      |
|---------------------|-----------------------|--------------|---------------------|---|--------------|---------------------|-------------------------|--------------|---|-----------------------|--------------|
| <b>GLADES PLAZA</b> |                       |              | <b>GLADES PLAZA</b> |   |              | <b>GLADES PLAZA</b> |                         |              | <b>GLADES PLAZA</b>                           |                       |              |
| 101-101A            | Relax the Back        | 3,116        | 107                 | De Leon Hair Salon                      | 1,990        | <b>307</b>          | <b>Available</b>        | <b>1,877</b> | 502   | LaSpada's Hoagie Cafe | 1,600        |
| 102A                | H&H Bagels            | 1,226        | 201                 | Abe & Louie's                           | 7,457        | <b>308</b>          | <b>Available</b>        | <b>2,082</b> | <b>504</b>                                    | <b>Available</b>      | <b>3,121</b> |
| 102                 | Starbucks             | 2,000        | <b>302</b>          | <b>Available</b>                        | <b>4,931</b> | <b>309</b>          | <b>Available</b>        | <b>2,449</b> | 506   | Rene Ruiz             | 2,045        |
| 103A                | Fitlife Foods         | 1,137        | 304                 | SIA Specialty Infusion and Wellness Spa | 1,339        | 401                 | Sweat 440 (Coming Soon) | 3,881        | 507   | OXXO Care Cleaner     | 1,095        |
| 103B                | Closet Full of Linens | 1,078        | 305                 | Ideal Image                             | 3,039        | 403                 | Raw Juice               | 1,363        | 508   | Crumbl Cookies        | 1,498        |
| <b>105</b>          | <b>Available</b>      | <b>1,858</b> | 306                 | Solidcore                               | 1,863        | 404                 | Man Cave (Coming Soon)  | 1,323        | <b>2222</b>                                   | <b>Available</b>      | <b>7,091</b> |
| 106                 | Holistic Nails        | 1,325        | 405                 | Flying Lizard                           | 4,025        |                     |                         |              | <b>Glades Plaza Total Square Feet: 65,809</b> |                       |              |

# GLADES TWIN PLAZA LEASING PLAN

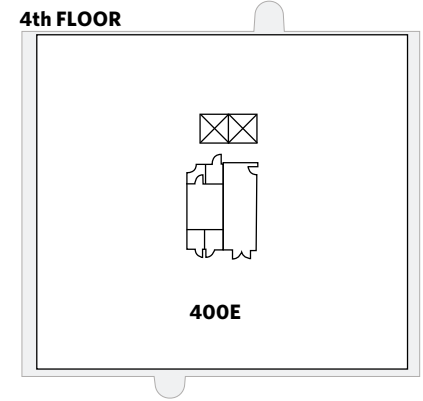
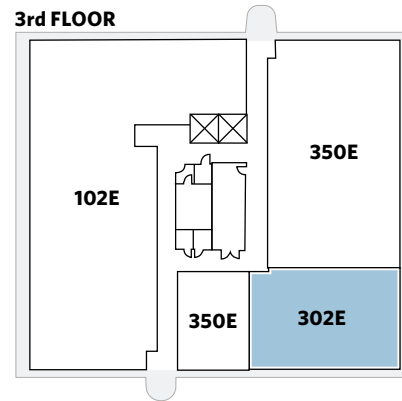
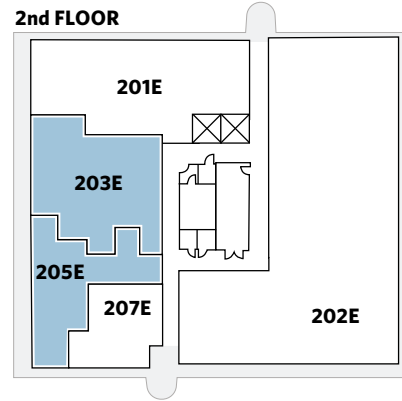
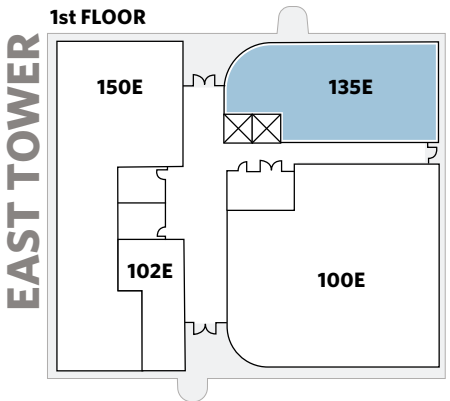
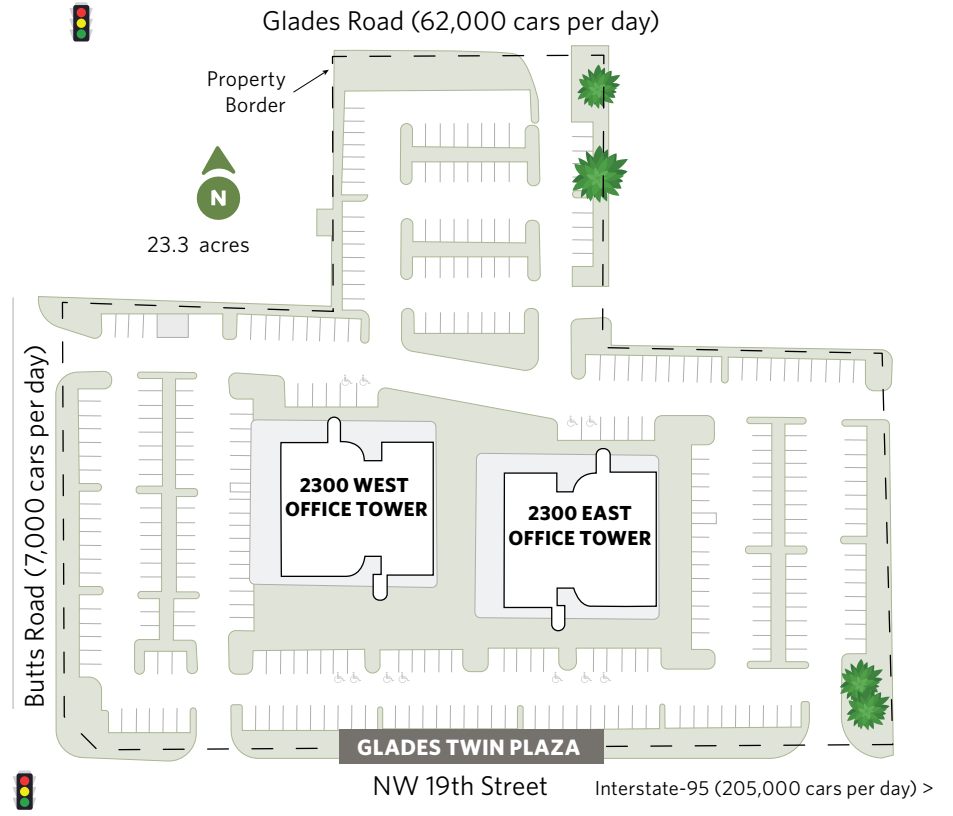
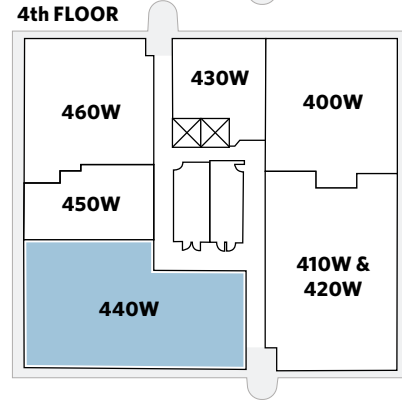
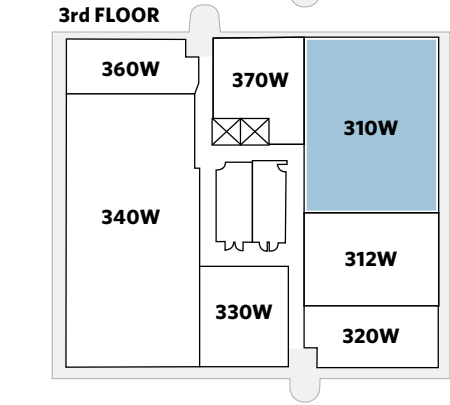
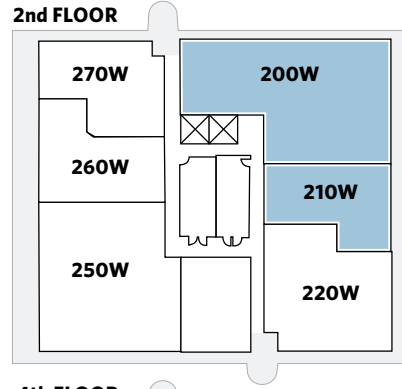
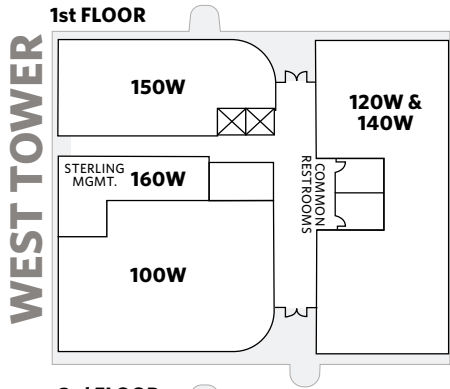
2200-2300 Glades Rd. & 2240 NW 19th St., Boca Raton, FL 33431

For information:

**Karl Brinkman**

E: [kbrinkman@sterlingorganization.com](mailto:kbrinkman@sterlingorganization.com)

P: 855-912-7090



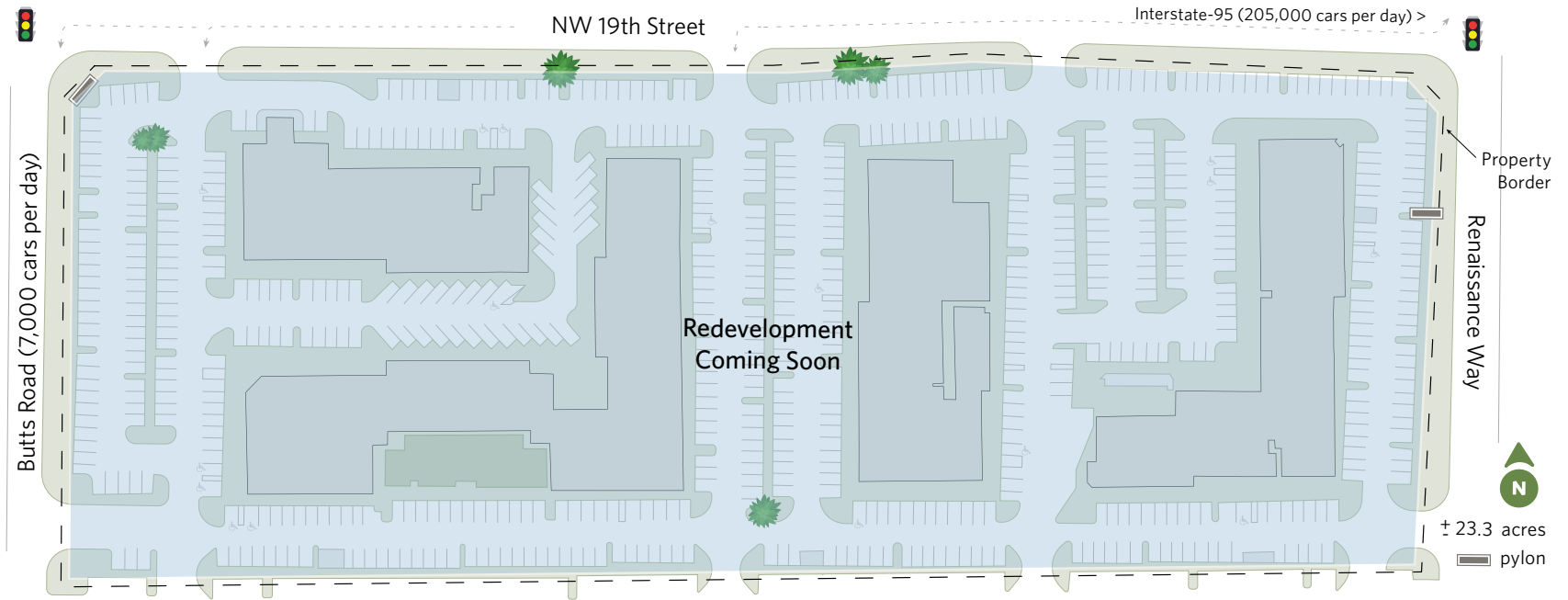
# COMMONS AT TOWN CENTER LEASING PLAN

2200-2300 Glades Rd. & 2240 NW 19th St.  
Boca Raton, FL 33431

For information:

**Karl Brinkman**

E: kbrinkman@sterlingorganization.com  
P: 855-912-7090



| UNIT                                     | RETAIL TENANT               | SQ. FT.      |
|--|-----------------------------|--------------|
| <b>THE COMMONS AT TOWN CENTER - WEST</b> |                             |              |
| 601                                      | Barbara Katz Sportswear Co. | 9,368        |
| 604                                      | Yoga Journey                | 3,304        |
| <b>609</b>                               | <b>Available</b>            | <b>1,467</b> |
| <b>611</b>                               | <b>Available</b>            | <b>1,990</b> |
| <b>613</b>                               | <b>Available</b>            | <b>4,404</b> |
| 614                                      | LaSpada's Hoagie Cafe       | 1,368        |

| UNIT                                     | RETAIL TENANT    | SQ. FT.       |
|--|------------------|---------------|
| <b>THE COMMONS AT TOWN CENTER - WEST</b> |                  |               |
| 700                                      | Toojay's         | 5,300         |
| <b>701</b>                               | <b>Available</b> | <b>4,450</b>  |
| <b>703</b>                               | <b>Available</b> | <b>9,822</b>  |
| <b>800A</b>                              | <b>Available</b> | <b>4,000</b>  |
| <b>800B</b>                              | <b>Available</b> | <b>11,384</b> |
| <b>807</b>                               | <b>Available</b> | <b>5,861</b>  |

**The Commons at Town Center - WEST**  
**Total Square Feet: 62,718**

| UNIT                                     | RETAIL TENANT         | SQ. FT.      |
|--|-----------------------|--------------|
| <b>THE COMMONS AT TOWN CENTER - EAST</b> |                       |              |
| 900                                      | Five Guys             | 2,694        |
| <b>901</b>                               | <b>Available</b>      | <b>2,577</b> |
| 904                                      | Nicks New Haven Pizza | 4,747        |
| <b>907</b>                               | <b>Available</b>      | <b>1,235</b> |
| <b>908-911</b>                           | <b>Available</b>      | <b>4,570</b> |
| <b>912</b>                               | <b>Available</b>      | <b>1,951</b> |
| <b>913</b>                               | <b>Available</b>      | <b>1,008</b> |
| 914.916                                  | Casa de Montecristo   | 4,557        |
| <b>915</b>                               | <b>Available</b>      | <b>3,263</b> |
| <b>1101</b>                              | <b>Available</b>      | <b>1,730</b> |
| <b>1101B</b>                             | <b>Available</b>      | <b>1,656</b> |

| UNIT                                     | RETAIL TENANT         | SQ. FT.      |
|--|-----------------------|--------------|
| <b>THE COMMONS AT TOWN CENTER - EAST</b> |                       |              |
| <b>1101C</b>                             | <b>Available</b>      | <b>500</b>   |
| <b>1102</b>                              | <b>Available</b>      | <b>3,000</b> |
| 1103                                     | Salon Chenzo          | 2,258        |
| <b>1200</b>                              | <b>Available</b>      | <b>2,944</b> |
| 1200B                                    | Moe's Southwest Grill | 2,504        |
| <b>1201</b>                              | <b>Available</b>      | <b>3,168</b> |
| <b>1203</b>                              | <b>Available</b>      | <b>1,242</b> |
| <b>1204</b>                              | <b>Available</b>      | <b>1,238</b> |
| <b>1205</b>                              | <b>Available</b>      | <b>1,235</b> |
| 1206                                     | Man Cave              | 1,500        |

**The Commons at Town Center - EAST**  
**Total Square Feet: 55,077**

# GLADES PLAZA LEASING PLAN

2200-2300 Glades Rd. & 2240 NW 19th St., Boca Raton, FL 33431

| UNIT   | OFFICE TENANT   | SQ. FT.      |
|--|---|--------------|
| <b>GLADES TWIN PLAZA - WEST OFFICE TOWER</b> |   |              |
| 100-140W                                     | Seacoast National Bank                                | 6,835        |
| 150W   | PrimeLending  | 1,852        |
| 160W   | Mgmt. Office  | -            |
| <b>200W</b>                                  | <b>Available</b>                                      | <b>3,437</b> |
| <b>210W</b>                                  | <b>Available</b>                                      | <b>1,340</b> |
| 220W   | F&V Capital Management                                | 2,020        |
| 230W   | First Alliance Group                                  | 950          |
| 250W   | Alliant Insurance                                     | 2,694        |
| 260W   | Sentinel Private Wealth                               | 1,499        |
| 270W   | Paul Ghougasian, P.A.                                 | 1,600        |
| <b>310W</b>                                  | <b>Available</b>                                      | <b>2,419</b> |
| 312W   | CaseClients   | 1,502        |
| 320W   | CB Recovery Group                                     | 1,735        |
| 330W   | Priscila Iwama Medical and Cosmetic Dermopigmentation | 1,117        |
| 340W   | Lydecker Diaz   | 4,650        |
| 360W   | USGB Enterprises                                      | 921          |
| 370W   | Lydecker Diaz   | 1,090        |
| 400-420W                                     | Wrathell, Hunt & Associates                           | 5,884        |
| 430W   | JB Law  | 800          |
| <b>440W</b>                                  | <b>Available</b>                                      | <b>3,296</b> |
| 450W   | Wrathell Hunt & Associates                            | 1,079        |
| 460W   | Wrathell Hunt & Associates                            | 2,381        |

| UNIT   | OFFICE TENANT               | SQ. FT.       |
|--|-----------------------------|---------------|
| <b>GLADES TWIN PLAZA - EAST OFFICE TOWER</b> |                             |               |
| 100E   | Cutiscare                   | 3,993         |
| 102E   | Deluxe Financial            | 5,558         |
| <b>135E</b>                                  | <b>Available</b>            | <b>1,885</b>  |
| 150E   | NuLife Institute            | 2,399         |
| 201E   | Gastro Health               | 2,694         |
| 202E   | ISO Management              | 6,639         |
| <b>203E</b>                                  | <b>Available</b>            | <b>1,506</b>  |
| <b>205E</b>                                  | <b>Available</b>            | <b>1,148</b>  |
| 207E   | Garber & Garber, CPAs, P.A. | 819           |
| <b>302E</b>                                  | <b>Available</b>            | <b>1,854</b>  |
| 350E   | Anxiety Institute           | 6,775         |
| 400E   | Torticity                   | 13,455        |
| <b>Total Office Square Feet:</b>             |                             | <b>97,826</b> |

| UNIT                | RETAIL TENANT                           | SQ. FT.      |
|---------------------|---|--------------|
| <b>GLADES PLAZA</b> |   |              |
| 101-101A            | Relax the Back                          | 3,116        |
| 102A                | H&H Bagels                              | 1,226        |
| 102                 | Starbucks                               | 2,000        |
| 103A                | Fitlife Foods                           | 1,137        |
| 103B                | Closet Full of Linens                   | 1,078        |
| <b>105</b>          | <b>Available</b>                        | <b>1,858</b> |
| 106                 | Holistic Nails                          | 1,325        |
| 107                 | De Leon Hair Salon                      | 1,990        |
| 201                 | Abe & Louie's                           | 7,457        |
| <b>302</b>          | <b>Available</b>                        | <b>4,931</b> |
| 304                 | SIA Specialty Infusion and Wellness Spa | 1,339        |
| 305                 | Ideal Image                             | 3,039        |
| 306                 | Solidcore                               | 1,863        |

| UNIT                | RETAIL TENANT           | SQ. FT.      |
|---------------------|-------------------------|--------------|
| <b>GLADES PLAZA</b> |                         |              |
| <b>307</b>          | <b>Available</b>        | <b>1,877</b> |
| <b>308</b>          | <b>Available</b>        | <b>2,082</b> |
| <b>309</b>          | <b>Available</b>        | <b>2,449</b> |
| 401                 | Sweat 440 (Coming Soon) | 3,881        |
| 403                 | Raw Juice               | 1,363        |
| 404                 | Man Cave (Coming Soon)  | 1,323        |
| 405                 | Flying Lizard           | 4,025        |
| 502                 | LaSpada's Hoagie Cafe   | 1,600        |
| <b>504</b>          | <b>Available</b>        | <b>3,121</b> |
| 506                 | Rene Ruiz               | 2,045        |
| 507                 | OXXO Care Cleaner       | 1,095        |
| 508                 | Crumbl Cookies          | 1,498        |
| <b>2222</b>         | <b>Available</b>        | <b>7,091</b> |

**Glades Plaza Total Square Feet: 65,809**

| UNIT                                     | RETAIL TENANT               | SQ. FT.       |
|--|-----------------------------|---------------|
| <b>THE COMMONS AT TOWN CENTER - WEST</b> |                             |               |
| 601                                      | Barbara Katz Sportswear Co. | 9,368         |
| 604                                      | Yoga Journey                | 3,304         |
| <b>609</b>                               | <b>Available</b>            | <b>1,467</b>  |
| <b>611</b>                               | <b>Available</b>            | <b>1,990</b>  |
| <b>613</b>                               | <b>Available</b>            | <b>4,404</b>  |
| 614                                      | LaSpada's Hoagie Cafe       | 1,368         |
| 700                                      | TooJay's                    | 5,300         |
| <b>701</b>                               | <b>Available</b>            | <b>4,450</b>  |
| <b>703</b>                               | <b>Available</b>            | <b>9,822</b>  |
| <b>800A</b>                              | <b>Available</b>            | <b>4,000</b>  |
| <b>800B</b>                              | <b>Available</b>            | <b>11,384</b> |
| <b>807</b>                               | <b>Available</b>            | <b>5,861</b>  |

**The Commons at Town Center West - Total Square Feet: 62,718**

| UNIT                                     | RETAIL TENANT         | SQ. FT.      |
|--|-----------------------|--------------|
| <b>THE COMMONS AT TOWN CENTER - EAST</b> |                       |              |
| 900                                      | Five Guys             | 2,694        |
| <b>901</b>                               | <b>Available</b>      | <b>2,577</b> |
| 904                                      | Nicks New Haven Pizza | 4,747        |
| <b>907</b>                               | <b>Available</b>      | <b>1,235</b> |
| <b>908-911</b>                           | <b>Available</b>      | <b>4,570</b> |
| <b>912</b>                               | <b>Available</b>      | <b>1,951</b> |
| <b>913</b>                               | <b>Available</b>      | <b>1,008</b> |
| 914.916                                  | Casa de Montecristo   | 4,557        |
| <b>915</b>                               | <b>Available</b>      | <b>3,263</b> |
| <b>1101</b>                              | <b>Available</b>      | <b>1,730</b> |
| <b>1101B</b>                             | <b>Available</b>      | <b>1,656</b> |
| <b>1101C</b>                             | <b>Available</b>      | <b>500</b>   |
| <b>1102</b>                              | <b>Available</b>      | <b>3,000</b> |
| 1103                                     | Salon Chenzo          | 2,258        |
| <b>1200</b>                              | <b>Available</b>      | <b>2,944</b> |
| 1200B                                    | Moe's Southwest Grill | 2,504        |
| <b>1201</b>                              | <b>Available</b>      | <b>3,168</b> |
| <b>1203</b>                              | <b>Available</b>      | <b>1,242</b> |
| <b>1204</b>                              | <b>Available</b>      | <b>1,238</b> |
| <b>1205</b>                              | <b>Available</b>      | <b>1,235</b> |
| 1206                                     | Man Cave              | 1,500        |

**The Commons at Town Center East - Total Square Feet: 55,077**

**Total Retail Square Feet: 183,552**  
**Total Square Feet: 281,378**

**For information:**

**Karl Brinkman**

E: kbrinkman@sterlingorganization.com  
P: 855-912-7090



The plan and its contents are furnished for informational purposes only and are intended only as a general description (but not represented, covenanted or warranted). The size and location of the project, the identity or nature of any occupant and all features, matters and other information included herein are subject to change without notice and should not be relied upon by any party. No representation or warranty, express or implied, is made as to the accuracy or reliability of this plan or its contents.