

CHARLOTTE, NC

WINSLOW BAY COMMONS

594 River Highway, Mooresville, NC 28117



The plan and its contents are furnished for informational purposes only and are intended only as a general description (but not represented, covenanted or warranted). The size and location of the project, the identity or nature of any occupant and all features, matters and other information included herein are subject to change without notice and should not be relied upon by any party. No representation or warranty, express or implied, is made as to the accuracy or reliability of this plan or its contents.

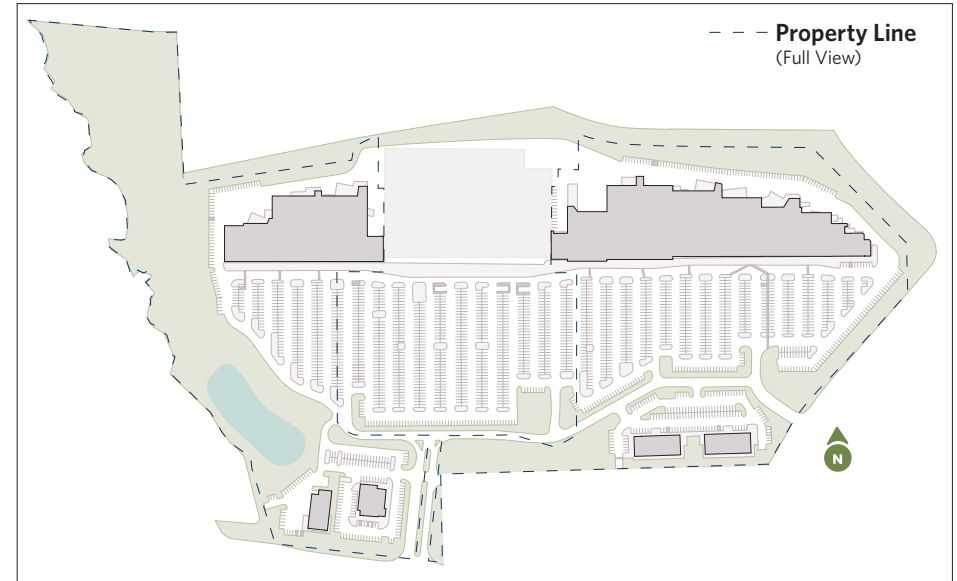
□ CHARLOTTE, NC

WINSLOW BAY COMMONS

594 River Highway, Mooresville, NC 28117

UNIT	TENANT	SQ. FT.
590A	Available	1,000
590B	Lee Spa Nails	1,400
590C	Milan Laser Hair Removal	1,400
590E	Sola Salon Studios	5,400
590F	Rack Room Shoes	12,000
590G	PetSmart	19,435
590H	Michaels	21,300
590I	T.J. Maxx	30,000
590J	Dick's Sporting Goods	45,644
590K	World Market	18,300
590L	Carter's	4,000
598A	Kay Jewelers	2,100
598B	Sport Clips	1,400
598C	HomeGoods	24,335
598C-1	LensCrafters	4,225

UNIT	TENANT	SQ. FT.
598D	Ross Dress For Less	30,187
598E	Popshelf	9,522
598F	Available	7,150
604	Whataburger	6,999
610	Discount Tire	5,176
688A	Salsarita's	2,100
688B	The Golden Rack Boutique	1,500
688C	R&B Tea	1,200
688E	Cold Stone Creamery	1,200
688F	Tony's Pizza	2,400
690A	Pacific Dental	3,300
690C	Rice Fun	1,500
690D	AppleJuice iRepairs	1,200
690F	Sushi on the Lake	2,400
Total Square Feet:		267,773



For information: **Deirdre Delaporte**

E: ddelaporte@sterlingorganization.com

P: 855-589-5070



The plan and its contents are furnished for informational purposes only and are intended only as a general description (but not represented, covenanted or warranted). The size and location of the project, the identity or nature of any occupant and all features, matters and other information included herein are subject to change without notice and should not be relied upon by any party. No representation or warranty, express or implied, is made as to the accuracy or reliability of this plan or its contents.