

BOCA RATON, FL

# GLADES PLAZA

## LEASING PLAN

2200-2300 Glades Rd. & 2240 NW 19th St.

Boca Raton, FL 33431

< Traffic light at Butts Road

Interstate-95 (201,000 cars per day) >

Glades Road (61,600 cars per day)



- N
- ± 23.3 acres
- pylon
- 2nd Generation Restaurant Space



**TOWN CENTER AT BOCA RATON**

Redevelopment Coming Soon

**For information:**  
**Caroline Horne**

E: [chorne@sterlingorganization.com](mailto:chorne@sterlingorganization.com)  
P: 855-300-3832

WEST - THE COMMONS AT TOWN CENTER - EAST



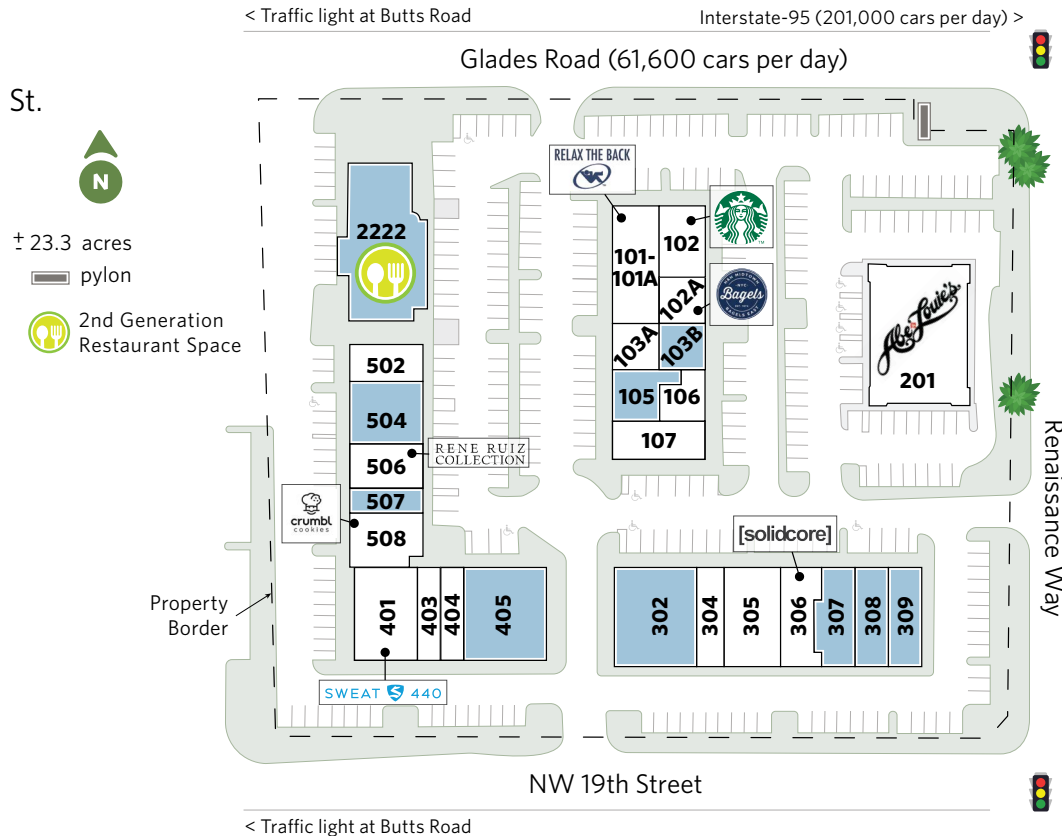
The plan and its contents are furnished for informational purposes only and are intended only as a general description (but not represented, covenanted or warranted). The size and location of the project, the identity or nature of any occupant and all features, matters and other information included herein are subject to change without notice and should not be relied upon by any party. No representation or warranty, express or implied, is made as to the accuracy or reliability of this plan or its contents.

# GLADES PLAZA

## LEASING PLAN

2200-2300 Glades Rd. & 2240 NW 19th St.

Boca Raton, FL 33431



**For information:**

**Caroline Horne**

E: [chorne@sterlingorganization.com](mailto:chorne@sterlingorganization.com)

P: 855-300-3832

UNIT	RETAIL TENANT	SQ. FT.	UNIT	RETAIL TENANT	SQ. FT.	UNIT	RETAIL TENANT	SQ. FT.	UNIT	RETAIL TENANT	SQ. FT.
<b>GLADES PLAZA</b>			<b>GLADES PLAZA</b>			<b>GLADES PLAZA</b>			<b>GLADES PLAZA</b>		
101-101A	Relax the Back	3,116	107	De Leon Hair Salon	1,990	<b>307</b>	<b>Available</b>	<b>1,877</b>	502	LaSpada's Hoagie Cafe	1,600
102A	H&H Bagels	1,226	201	Abe & Louie's	7,457	<b>308</b>	<b>Available</b>	<b>2,082</b>	<b>504</b>	<b>Available</b>	<b>3,121</b>
102	Starbucks	2,000	<b>302</b>	<b>Available</b>	<b>4,931</b>	<b>309</b>	<b>Available</b>	<b>2,449</b>	506	Rene Ruiz	2,045
103A	Fitlife Foods	1,137	304	SIA Specialty Infusion and Wellness Spa	1,339	401	Sweat 440	3,881	<b>507</b>	<b>Available</b>	<b>1,095</b>
<b>103B</b>	<b>Available</b>	<b>1,078</b>	305	Ideal Image	3,039	403	Raw Juce	1,363	508	Crumbl Cookies	1,498
<b>105</b>	<b>Available</b>	<b>1,858</b>	306	Solidcore	1,863	404	Man Cave	1,323	<b>2222</b>	<b>Available</b>	<b>7,091</b>
106	Holistic Nails	1,325	<b>405</b>	<b>Available</b>	<b>4,025</b>	<b>Glades Plaza Total Square Feet: 65,809</b>					

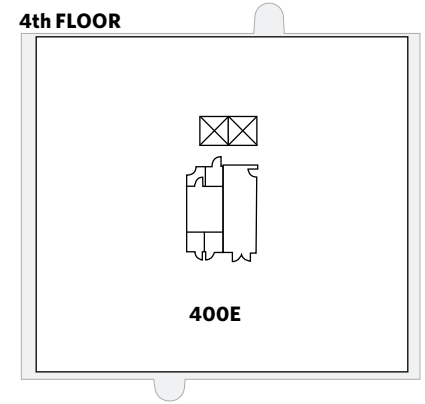
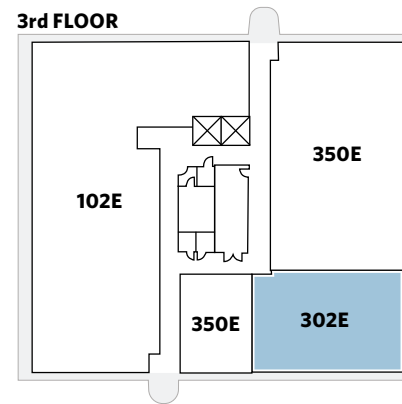
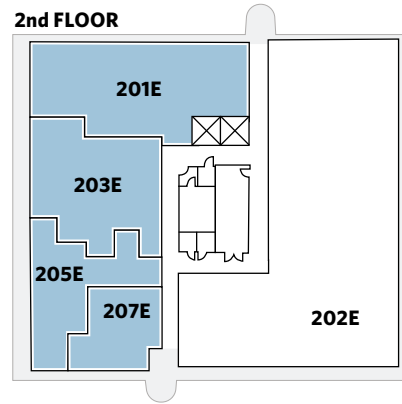
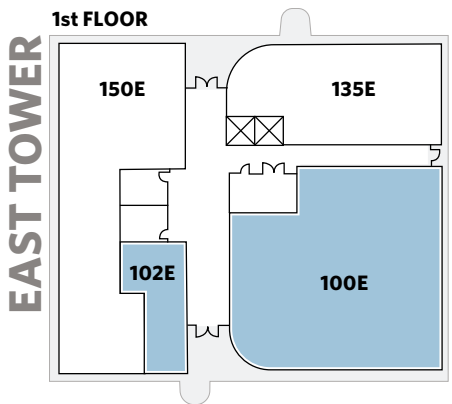
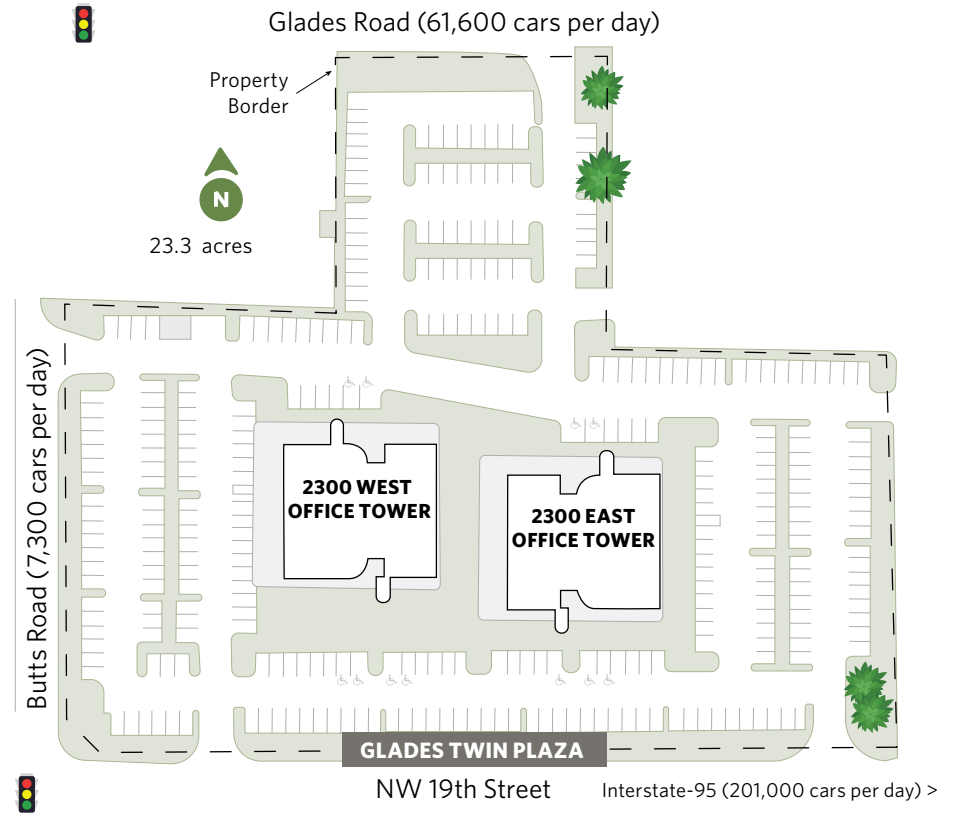
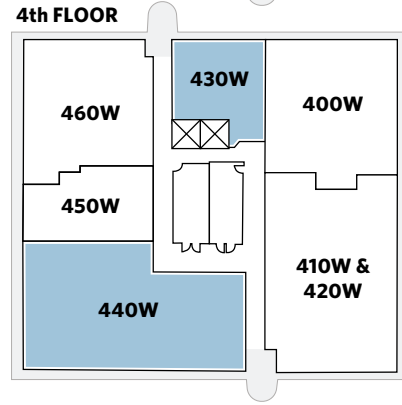
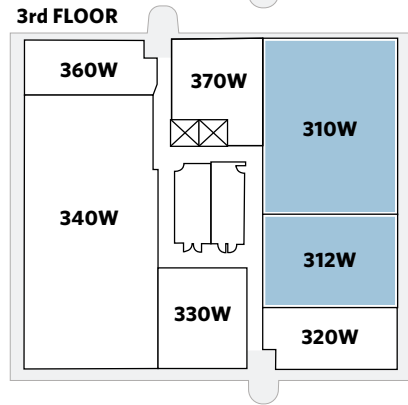
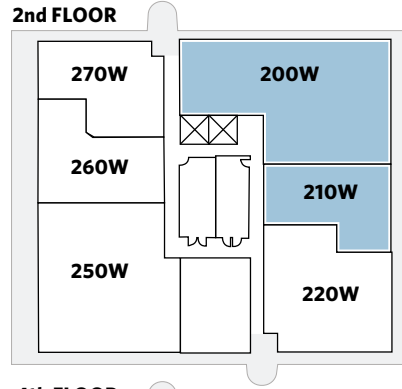
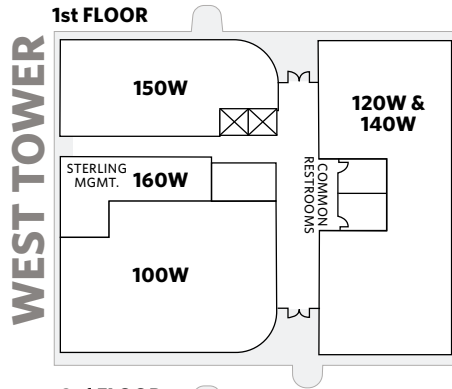
# GLADES TWIN PLAZA LEASING PLAN

2200-2300 Glades Rd. & 2240 NW 19th St., Boca Raton, FL 33431

For information:  
**Caroline Horne**

E: [chorne@sterlingorganization.com](mailto:chorne@sterlingorganization.com)

P: 855-300-3832



# COMMONS AT TOWN CENTER LEASING PLAN

2200-2300 Glades Rd. & 2240 NW 19th St.  
Boca Raton, FL 33431

For information:

**Caroline Horne**

E: [chorne@sterlingorganization.com](mailto:chorne@sterlingorganization.com)  
P: 855-300-3832



UNIT	RETAIL TENANT	SQ. FT.
<b>THE COMMONS AT TOWN CENTER - WEST</b>		
601	Available	9,368
604	Yoga Journey	3,304
609	Available	1,467
611	Available	1,990
613	Available	4,404
614	Available	1,368

UNIT	RETAIL TENANT	SQ. FT.
<b>THE COMMONS AT TOWN CENTER - WEST</b>		
700	Available	5,300
701	Available	4,450
703	Available	9,822
800A	Available	4,000
800B	Available	11,384
807	Available	5,861

**The Commons at Town Center - WEST**  
**Total Square Feet: 62,718**

UNIT	RETAIL TENANT	SQ. FT.
<b>THE COMMONS AT TOWN CENTER - EAST</b>		
900	Five Guys	2,694
901	Available	2,577
904	Available	4,747
907	Available	1,235
908-911	Available	4,570
912	Available	1,951
913	Available	1,008
914.916	Casa de Montecristo	4,557
915	Available	3,263
1101	Available	1,730
1101A	Available	5,500

UNIT	RETAIL TENANT	SQ. FT.
<b>THE COMMONS AT TOWN CENTER - EAST</b>		
1101B	Available	1,656
1101C	Available	500
1102	Available	3,000
1103	Available	2,258
1200	Available	2,944
1200B	Moe's Southwest Grill	2,504
1201	Available	3,168
1203	Available	1,242
1204	Available	1,238
1205	Available	1,235
1206	Available	1,500

**The Commons at Town Center - EAST**  
**Total Square Feet: 55,077**



The plan and its contents are furnished for informational purposes only and are intended only as a general description (but not represented, covenanted or warranted). The size and location of the project, the identity or nature of any occupant and all features, matters and other information included herein are subject to change without notice and should not be relied upon by any party. No representation or warranty, express or implied, is made as to the accuracy or reliability of this plan or its contents.

# GLADES PLAZA LEASING PLAN

2200-2300 Glades Rd. & 2240 NW 19th St., Boca Raton, FL 33431

UNIT	OFFICE TENANT	SQ. FT.
<b>GLADES TWIN PLAZA - WEST OFFICE TOWER</b>		
100-140W	Seacoast National Bank	6,835
150W	PrimeLending	1,852
160W	Mgmt. Office	-
<b>200W</b>	<b>Available</b>	<b>3,437</b>
<b>210W</b>	<b>Available</b>	<b>1,340</b>
220W	F&V Capital Management	2,020
230W	First Alliance Group	950
250W	Alliant Insurance	2,694
260W	Sentinel Private Wealth	1,499
270W	Paul Ghougasian, P.A.	1,600
<b>310W</b>	<b>Available</b>	<b>2,419</b>
<b>312W</b>	<b>Available</b>	<b>1,502</b>
320W	CB Recovery Group	1,735
330W	Priscila Iwama Medical and Cosmetic Dermopigmentation	1,117
340W	Lydecker Diaz	4,650
360W	USGB Enterprises	921
370W	Lydecker Diaz	1,090
400-420W	Wrathell, Hunt & Associates	5,884
<b>430W</b>	<b>Available</b>	<b>800</b>
<b>440W</b>	<b>Available</b>	<b>3,296</b>
450W	Wrathell Hunt & Associates	1,079
460W	Wrathell Hunt & Associates	2,381

UNIT	OFFICE TENANT	SQ. FT.
<b>GLADES TWIN PLAZA - EAST OFFICE TOWER</b>		
<b>100E</b>	<b>Available</b>	<b>3,993</b>
<b>102E</b>	<b>Available</b>	<b>5,558</b>
135E	Compound Real Estate Bonds	1,885
150E	NuLife Institute	2,399
<b>201E</b>	<b>Available</b>	<b>2,694</b>
202E	ISO Management	6,639
<b>203E</b>	<b>Available</b>	<b>1,506</b>
<b>205E</b>	<b>Available</b>	<b>1,148</b>
<b>207E</b>	<b>Available</b>	<b>819</b>
<b>302E</b>	<b>Available</b>	<b>1,854</b>
350E	Anxiety Institute	6,775
400E	Torticity	13,455
<b>Total Office Square Feet:</b>		<b>97,826</b>

UNIT	RETAIL TENANT	SQ. FT.
<b>GLADES PLAZA</b>		
101-101A	Relax the Back	3,116
102A	H&H Bagels	1,226
102	Starbucks	2,000
103A	Fitlife Foods	1,137
<b>103B</b>	<b>Available</b>	<b>1,078</b>
<b>105</b>	<b>Available</b>	<b>1,858</b>
106	Holistic Nails	1,325
107	De Leon Hair Salon	1,990
201	Abe & Louie's	7,457
<b>302</b>	<b>Available</b>	<b>4,931</b>
304	SIA Specialty Infusion and Wellness Spa	1,339
305	Ideal Image	3,039
306	Solidcore	1,863

UNIT	RETAIL TENANT	SQ. FT.
<b>GLADES PLAZA</b>		
<b>307</b>	<b>Available</b>	<b>1,877</b>
<b>308</b>	<b>Available</b>	<b>2,082</b>
<b>309</b>	<b>Available</b>	<b>2,449</b>
401	Sweat 440	3,881
403	Raw Jūce	1,363
404	Man Cave	1,323
<b>405</b>	<b>Available</b>	<b>4,025</b>
502	LaSpada's Hoagie Cafe	1,600
<b>504</b>	<b>Available</b>	<b>3,121</b>
506	Rene Ruiz	2,045
<b>507</b>	<b>Available</b>	<b>1,095</b>
508	Crumbli Cookies	1,498
<b>2222</b>	<b>Available</b>	<b>7,091</b>

**Glades Plaza Total Square Feet: 65,809**

UNIT	RETAIL TENANT	SQ. FT.
<b>THE COMMONS AT TOWN CENTER - WEST</b>		
<b>601</b>	<b>Available</b>	<b>9,368</b>
604	Yoga Journey	3,304
<b>609</b>	<b>Available</b>	<b>1,467</b>
<b>611</b>	<b>Available</b>	<b>1,990</b>
<b>613</b>	<b>Available</b>	<b>4,404</b>
<b>614</b>	<b>Available</b>	<b>1,368</b>
<b>700</b>	<b>Available</b>	<b>5,300</b>
<b>701</b>	<b>Available</b>	<b>4,450</b>
<b>703</b>	<b>Available</b>	<b>9,822</b>
<b>800A</b>	<b>Available</b>	<b>4,000</b>
<b>800B</b>	<b>Available</b>	<b>11,384</b>
<b>807</b>	<b>Available</b>	<b>5,861</b>

**The Commons at Town Center West - Total Square Feet: 62,718**

UNIT	RETAIL TENANT	SQ. FT.
<b>THE COMMONS AT TOWN CENTER - EAST</b>		
900	Five Guys	2,694
<b>901</b>	<b>Available</b>	<b>2,577</b>
<b>904</b>	<b>Available</b>	<b>4,747</b>
<b>907</b>	<b>Available</b>	<b>1,235</b>
<b>908-911</b>	<b>Available</b>	<b>4,570</b>
<b>912</b>	<b>Available</b>	<b>1,951</b>
<b>913</b>	<b>Available</b>	<b>1,008</b>
914.916	Casa de Montecristo	4,557
<b>915</b>	<b>Available</b>	<b>3,263</b>
<b>1101</b>	<b>Available</b>	<b>1,730</b>
<b>1101A</b>	<b>Available</b>	<b>5,500</b>
<b>1101B</b>	<b>Available</b>	<b>1,656</b>
<b>1101C</b>	<b>Available</b>	<b>500</b>
<b>1102</b>	<b>Available</b>	<b>3,000</b>
<b>1103</b>	<b>Available</b>	<b>2,258</b>
<b>1200</b>	<b>Available</b>	<b>2,944</b>
1200B	Moe's Southwest Grill	2,504
<b>1201</b>	<b>Available</b>	<b>3,168</b>
<b>1203</b>	<b>Available</b>	<b>1,242</b>
<b>1204</b>	<b>Available</b>	<b>1,238</b>
<b>1205</b>	<b>Available</b>	<b>1,235</b>
<b>1206</b>	<b>Available</b>	<b>1,500</b>

**The Commons at Town Center East - Total Square Feet: 55,077**

**Total Retail Square Feet: 183,552**  
**Total Square Feet: 281,378**

**For information:**

**Caroline Horne**

E: chorne@sterlingorganization.com  
P: 855-300-3832



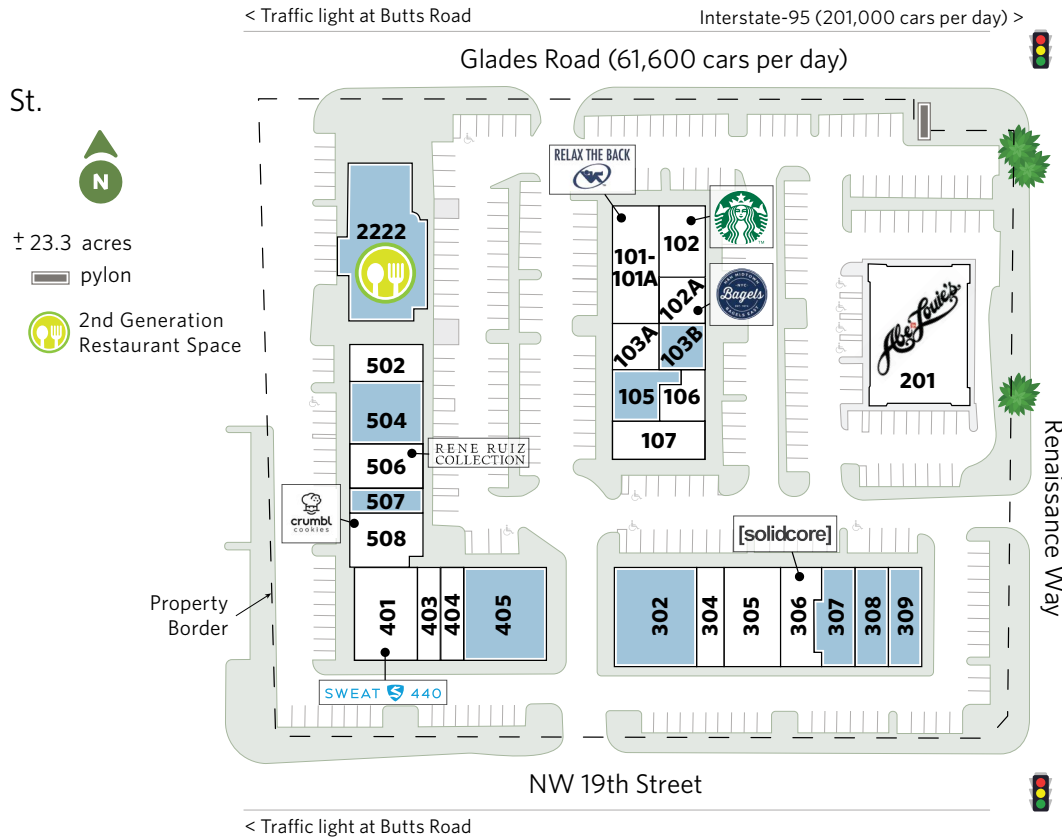
The plan and its contents are furnished for informational purposes only and are intended only as a general description (but not represented, covenanted or warranted). The size and location of the project, the identity or nature of any occupant and all features, matters and other information included herein are subject to change without notice and should not be relied upon by any party. No representation or warranty, express or implied, is made as to the accuracy or reliability of this plan or its contents.

# GLADES PLAZA

## LEASING PLAN

2200-2300 Glades Rd. & 2240 NW 19th St.

Boca Raton, FL 33431



**For information:**

**Caroline Horne**

E: [chorne@sterlingorganization.com](mailto:chorne@sterlingorganization.com)

P: 855-300-3832

UNIT	RETAIL TENANT	SQ. FT.	UNIT	RETAIL TENANT	SQ. FT.	UNIT	RETAIL TENANT	SQ. FT.	UNIT	RETAIL TENANT	SQ. FT.
<b>GLADES PLAZA</b>			<b>GLADES PLAZA</b>			<b>GLADES PLAZA</b>			<b>GLADES PLAZA</b>		
101-101A	Relax the Back	3,116	107	De Leon Hair Salon	1,990	<b>307</b>	<b>Available</b>	<b>1,877</b>	502	LaSpada's Hoagie Cafe	1,600
102A	H&H Bagels	1,226	201	Abe & Louie's	7,457	<b>308</b>	<b>Available</b>	<b>2,082</b>	<b>504</b>	<b>Available</b>	<b>3,121</b>
102	Starbucks	2,000	<b>302</b>	<b>Available</b>	<b>4,931</b>	<b>309</b>	<b>Available</b>	<b>2,449</b>	506	Rene Ruiz	2,045
103A	Fitlife Foods	1,137	304	SIA Specialty Infusion and Wellness Spa	1,339	401	Sweat 440	3,881	<b>507</b>	<b>Available</b>	<b>1,095</b>
<b>103B</b>	<b>Available</b>	<b>1,078</b>	305	Ideal Image	3,039	403	Raw Juce	1,363	508	Crumbl Cookies	1,498
<b>105</b>	<b>Available</b>	<b>1,858</b>	306	Solidcore	1,863	404	Man Cave	1,323	<b>2222</b>	<b>Available</b>	<b>7,091</b>
106	Holistic Nails	1,325	<b>405</b>	<b>Available</b>	<b>4,025</b>				<b>Glades Plaza Total Square Feet: 65,809</b>		